

Digital

Pro-face

USB Data Transfer Cable Installation Guide

Safety Precautions

This guide contains a variety of safety markings related to the safe and correct operation of the USB Data Transfer Cable. Be sure to read this guide and any related manuals carefully to fully understand how to correctly use this cable.

■ Safety Symbol

This guide uses the following safety-related symbol. Please pay attention to this symbol and follow the instructions given.

Safety symbol and its meaning:



WARNING

A potentially hazardous situation that could result in serious injury or death and cause major equipment damage if instructions are not followed.



WARNINGS

- Do not disassemble or remodel this cable in any way. Doing so may cause an electric shock or fire.
- Do not use this cable in areas where flammable gases are present. Doing so may cause an explosion.

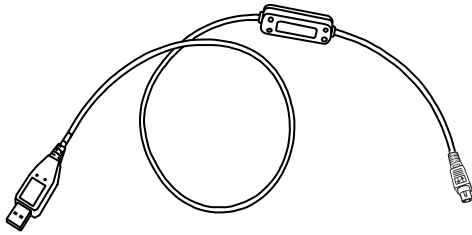
■ To Prevent USB Data Transfer Cable Damage

- Do not use the USB Data Transfer Cable at temperatures outside the range specified in this guide.
- Do not use or store this cable at very high temperatures.
- Do not use or store this cable in direct sunlight or excessively dusty or dirty environments.
- Do not use or store this cable in an environment where it may be exposed to chemical vapors or fumes.
- Do not allow water to enter the connector. Also, do not touch the connector if your hands are wet. Doing so may cause an electric shock.
- Do not connect or disconnect the USB Data Transfer Cable during data transfer. Doing so may cause a data communication error.

Package Contents

The following items are included in this unit's package. Prior to using the unit, be sure to confirm that all the items shown below are present in the package.

■ **USB Data Transfer Cable (1)**
(GPW-CB03)



■ **Driver CD (1)**



■ **USB Data Transfer Cable
Installation Guide
(This document)**

This unit has been carefully packed, with special attention to quality. However, if for any reason, you find any of the contents of this package damaged or missing, please contact your local Pro-face representative immediately.

Compatible OS Types

Microsoft® Windows® 98, Microsoft® Windows® Me, Microsoft® Windows® 2000, and Microsoft® Windows® XP.

Product names other than those listed below are trademarks or registered trademarks of their respective owners.

Trademark Name	Trademark Holder
Pro-face	Digital Electronics Corporation (In Japan and other countries)
Windows® 98, Windows® Me, Windows® 2000, Windows® XP	Microsoft Corporation, USA

1

Specifications

■ General

I/F Type	USB (Specification Rev. 1.1)
Connector Type	USB (Series A Plug)

■ Electrical

Rated Voltage	5VDC (Powered from USB bus & GP tool connector)
Power Consumption	0.5W (Max)

■ Environmental

Ambient Temperature	0°C to 50°C
Storage Temperature	-10°C to +60°C
Ambient Humidity	10%RH to 90%RH (No condensation, wet bulb temperature: 39°C or less)
Storage Humidity	10%RH to 90%RH (No condensation, wet bulb temperature: 39°C or less)

■ External

Weight	180g or less
External Dimensions (Cable length)	Overall Length $2.2 \pm 0.07\text{m}$ (From PC USB connector to circuit case $2.0 \pm 0.05\text{m}$)

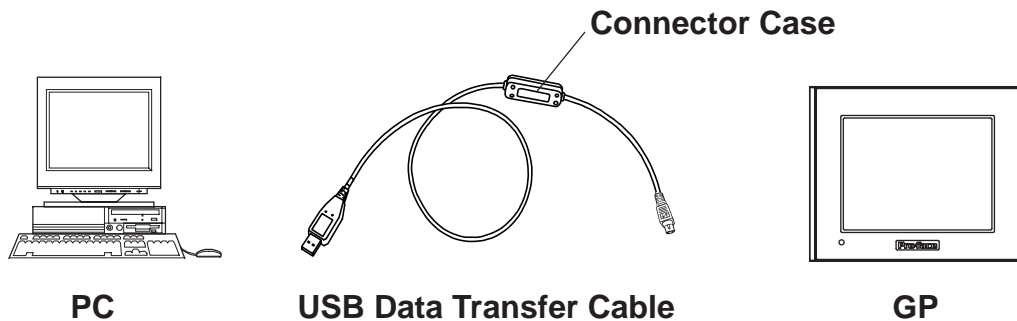


- ***The GP and PC signals are not insulated.***
- ***In the Data Transfer Cable, the FG (cable shield) and SG wires are shorted together.***
- ***Extending the length of the cable via a USB extension cord can degrade (weaken) signals, possibly causing an error. As a result, do not extend the length of the Data Transfer Cable.***

2

Installation

Connect the USB Data Transfer Cable's USB connector to your PC's USB port.



- ***Be sure to hold the cable connector, not the cable itself, when unplugging the cable from the GP unit. Next, pull down on the connector to release the connector's lock feature (However, certain GP types do not have this locking feature).***
- ***When connecting the USB Data Transfer Cable to your PC or to the GP, be sure to insert the cable's connector at the correct 90° angle. Failure to do so may damage either the connector or the main unit.***
- ***Since the data transfer cable's connector case is metal, be sure it does not contact the charged section of any other equipment.***

3

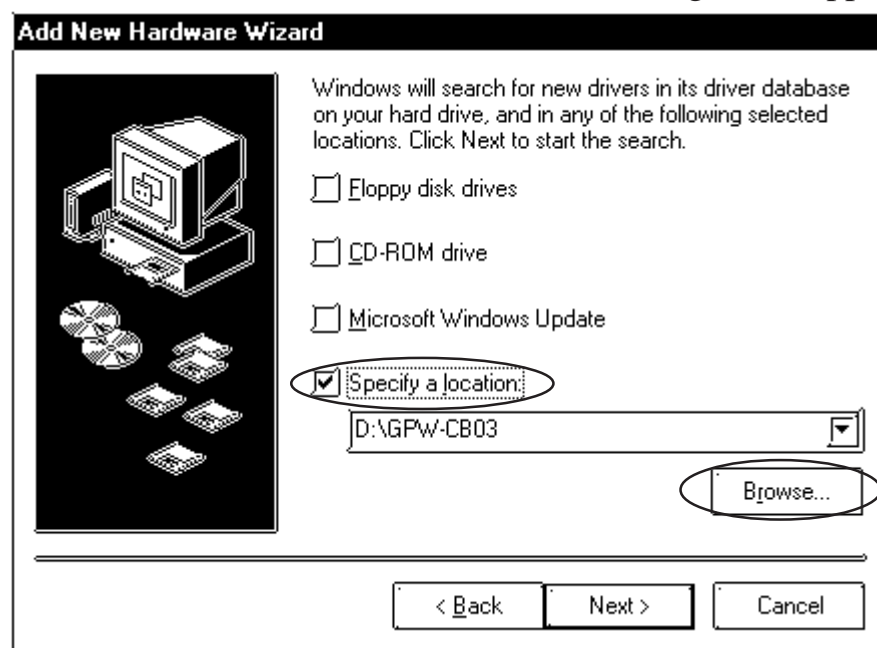
Installation Procedure

■ Windows® 98

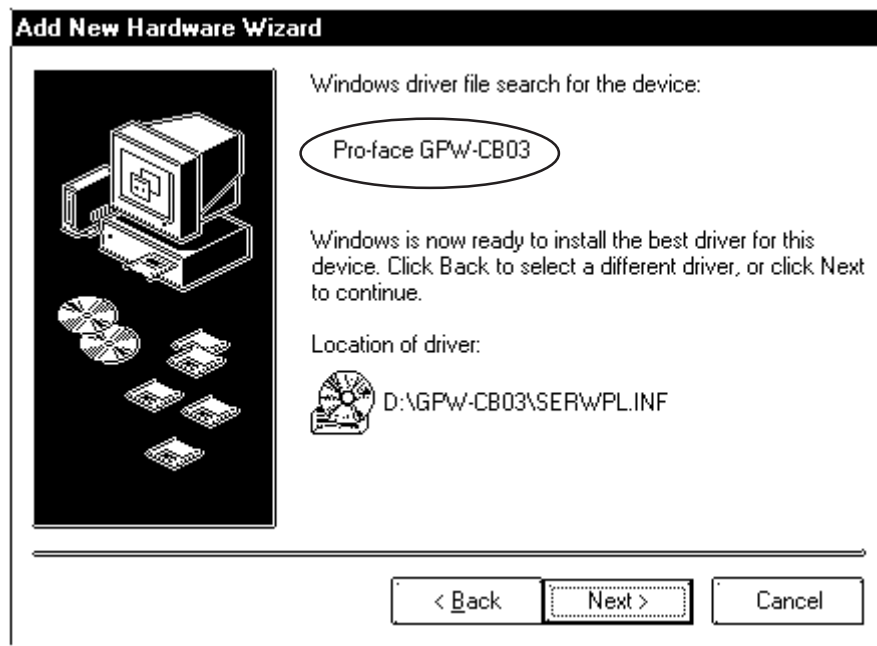
1. Start Windows, and connect the GPW-CB03 to your PC's USB port. Then, insert this package's driver CD into the PC's CD-ROM drive.
2. In the following [Add New Hardware Wizard] dialog box, click [Next].
3. The [Add New Hardware Wizard] dialog box should now display as shown below. Check the [Search for the best driver for your device. [Recommended].] option, and click [Next].



4. In the following dialog box, check the [Specify a location:] option, and click [Browse...]. Select the [GPW-CB03] folder in the installation CD-ROM. When the [Add New Hardware Wizard] dialog box reappears, click [Next].



5. Confirm that the [Windows driver file search for the device:] is [Pro-face GPW-CB03], and click [Next].



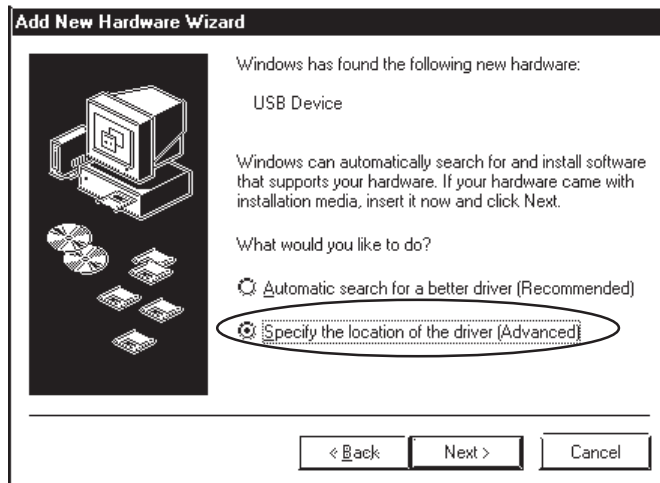
6. Click [Finish] to complete the installation.



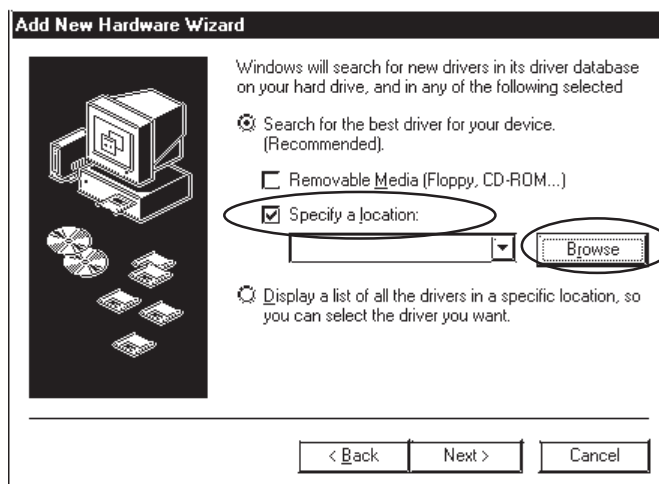
- **COM Port Numbers will be assigned in order, after previously connected devices.**
- **If installation does not complete successfully, be sure to restart the PC and quit all resident applications before re-installing the software.**

■ Windows® Me

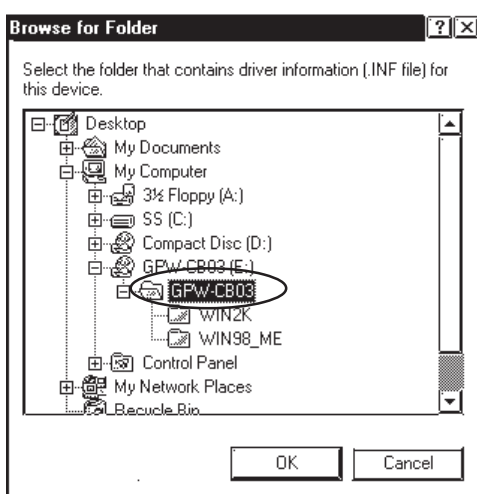
1. Start Windows, and connect the GPW-CB03 to your PC's USB port. Then, insert this package's driver CD into the PC's CD-ROM drive.
2. In the [Add New Hardware Wizard] dialog box, check the [Specify the location of the driver [Advanced]] option, and click [Next].



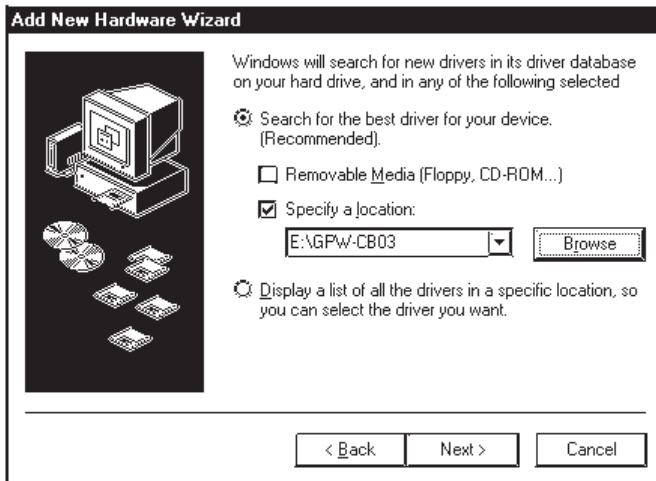
3. Check the [Specify a location:] option, and click [Browse].



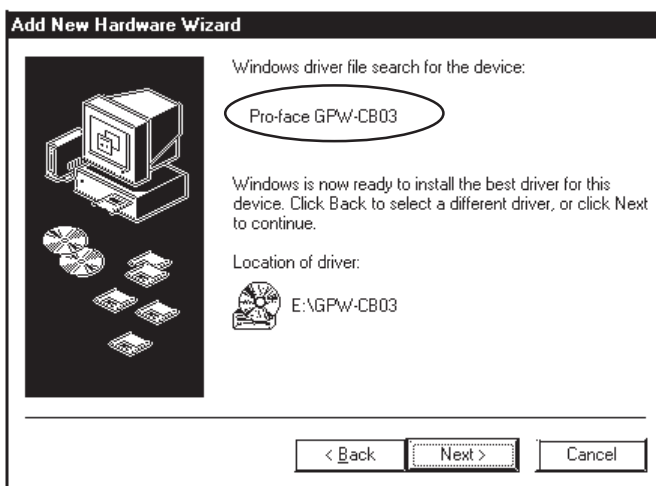
4. Select the [GPW-CB03] folder in the installation CD-ROM, and click [OK].



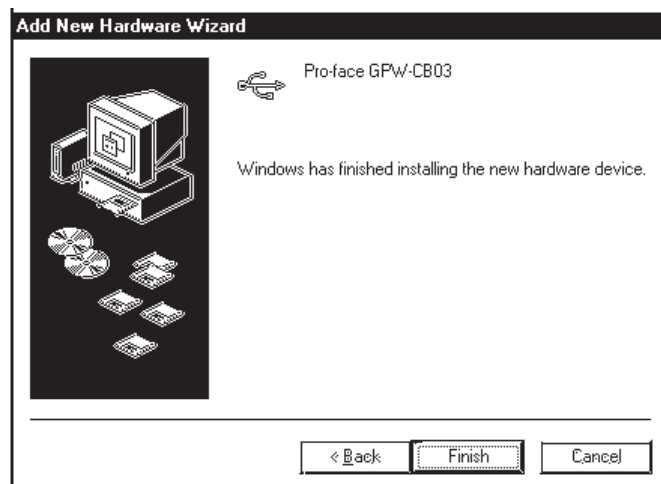
5. In the [Add New Hardware Wizard] screen, click [Next].



6. Confirm that the [Windows driver file search for the device:] is [Pro-face GPW-CB03], and click [Next].



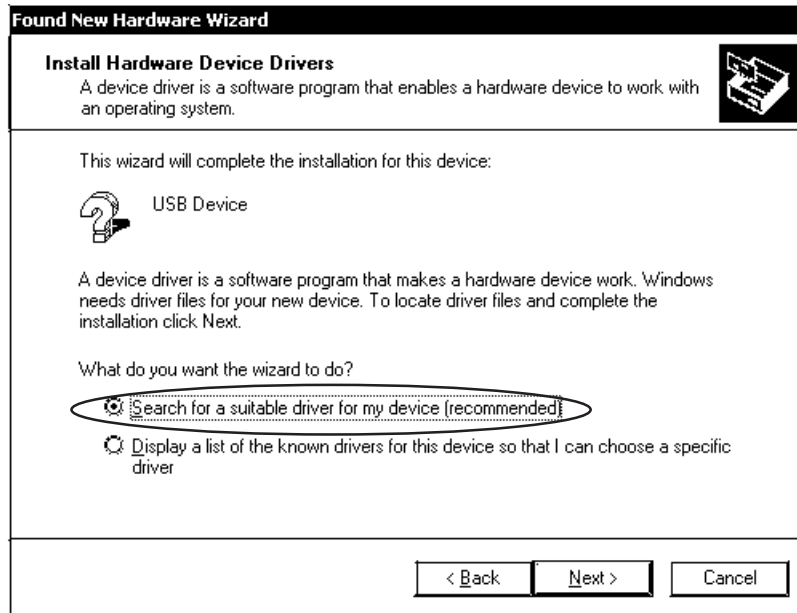
7. Click [Finish] to complete the installation.



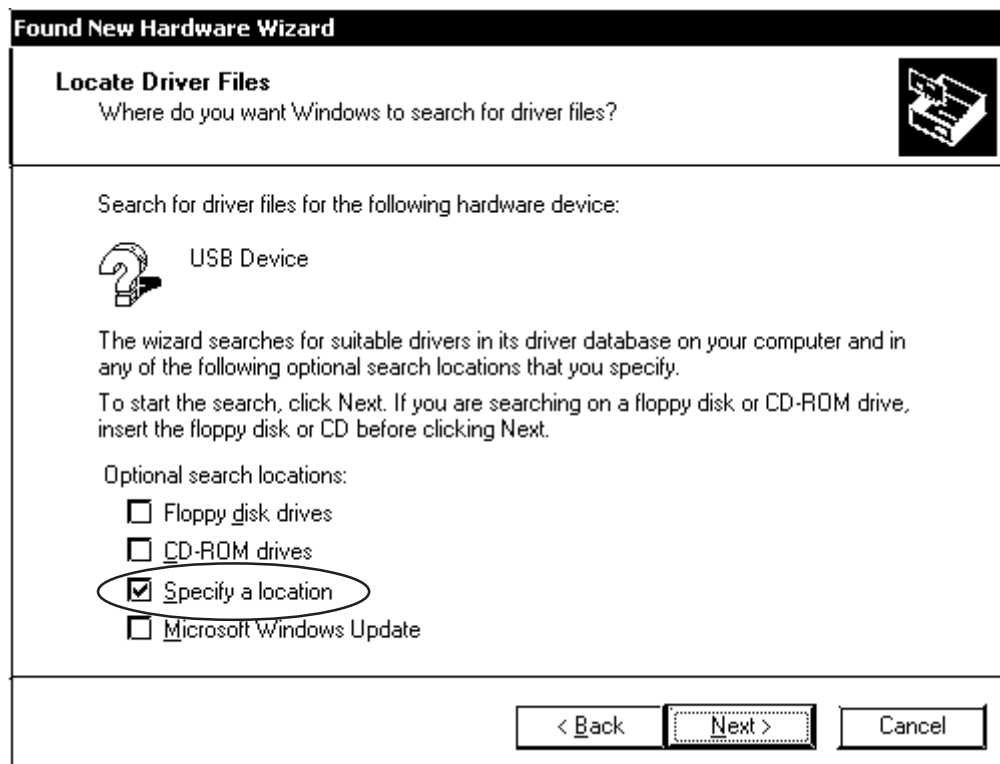
- **COM Port Numbers will be assigned in order, after previously connected devices.**
- **If installation does not complete successfully, be sure to restart the PC and quit all resident applications before re-installing the software.**

■ Windows® 2000

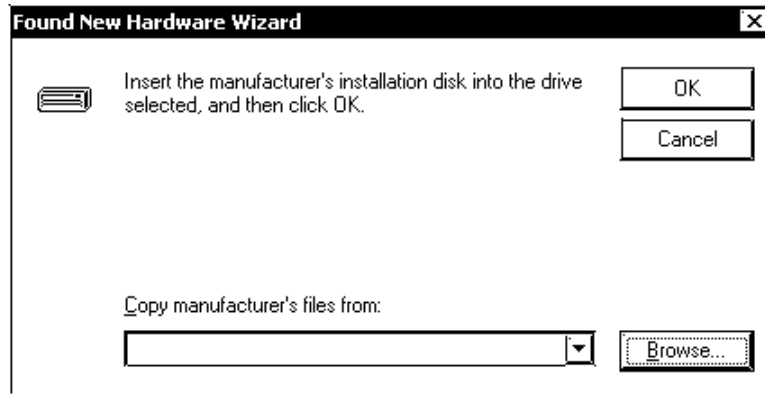
1. Start Windows, and connect the GPW-CB03 to your PC's USB port. Then, insert this package's driver CD into the PC's CD-ROM drive.
2. In the following [Found New Hardware Wizard] dialog box, click [Next].
3. The [Found New Hardware Wizard] dialog box should now display as shown below. Check the [Search for a suitable driver for my device [recommended]] option, and click [Next].



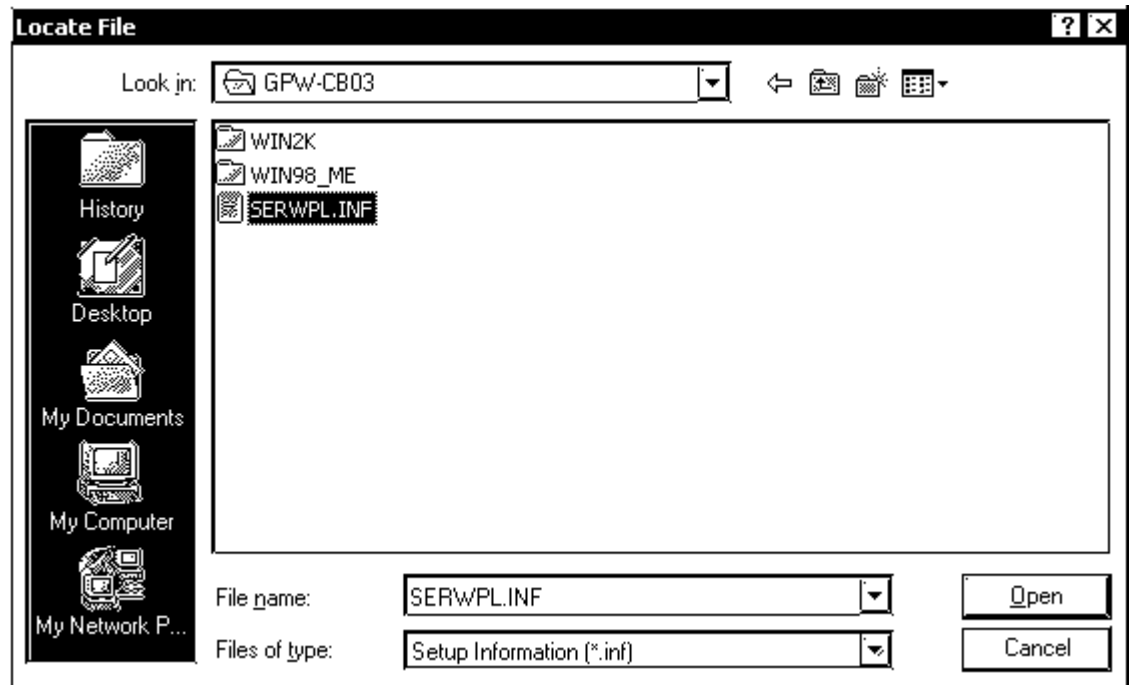
4. In the following dialog box, check the [Specify a location] option, and click [Next].



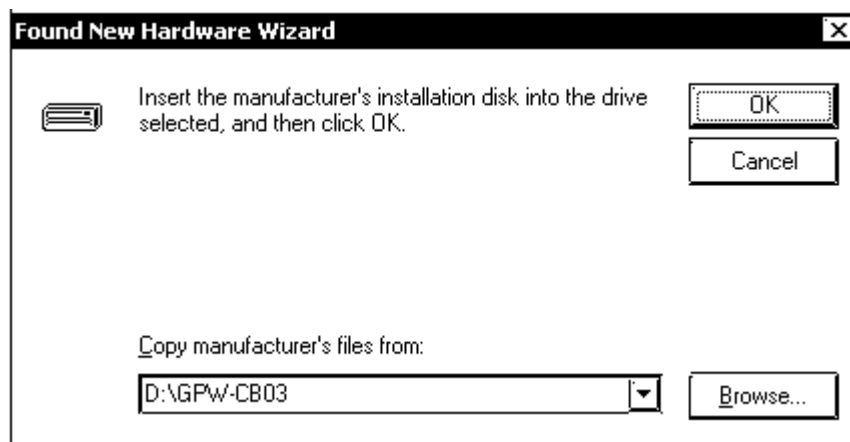
5. In the following dialog box, click [Browse...].



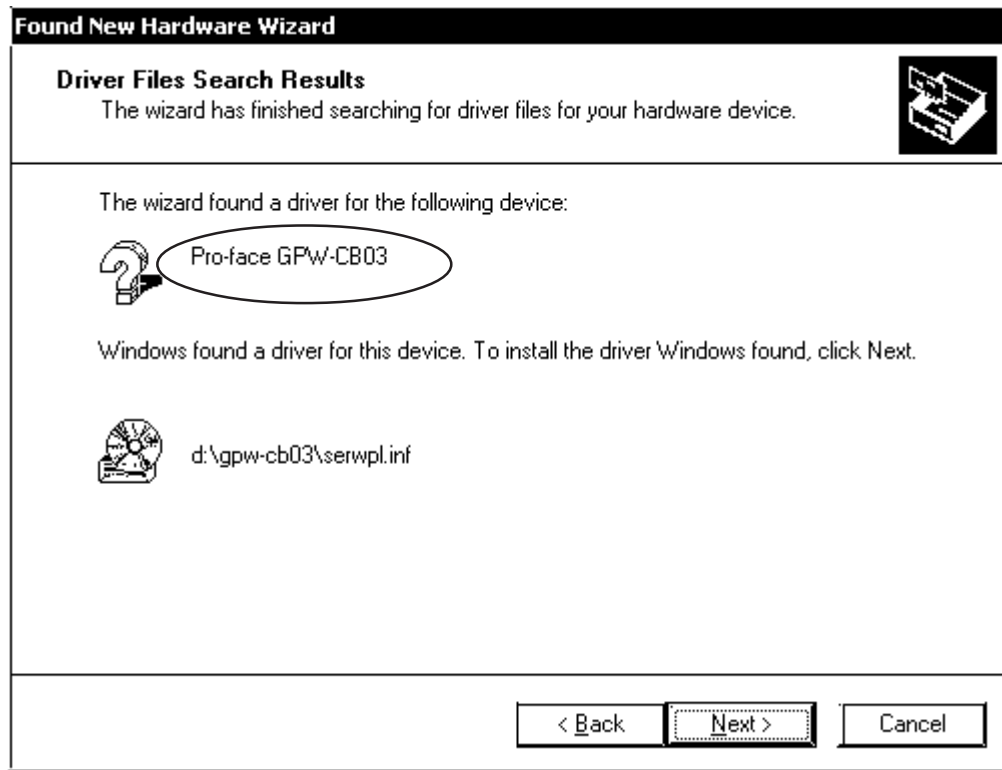
6. Select the [SERWPL.INF] file located in the CD-ROM drive's [GPW-CB03] folder, and click [Open].



7. In the following dialog box, click [OK].



8. Confirm that [The wizard found a driver for the following device:] is [Pro-face GPW-CB03], and click [Next].



9. Click [Finish] to complete the installation.



If the Data Transfer Cable is unplugged from the port designated during installation and connected to a different port, the OS will recognize the new port. Therefore, be sure to always use the port designated during installation.



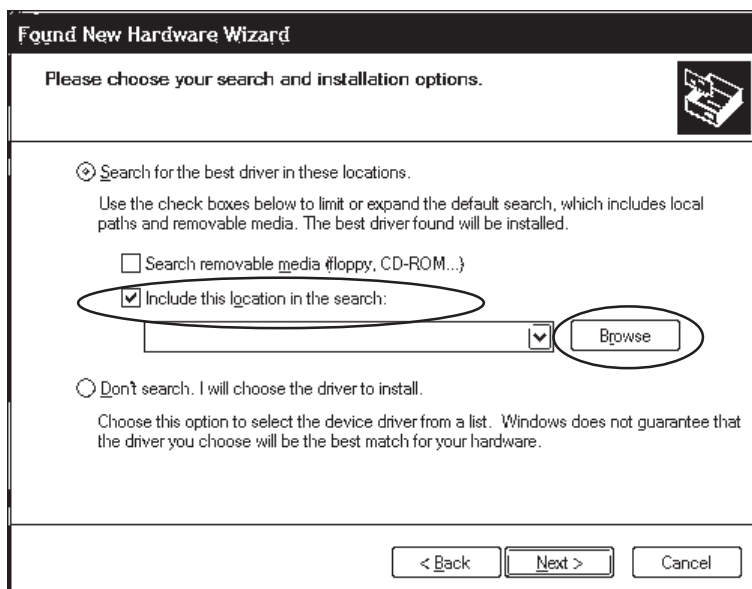
If installation does not complete successfully, be sure to restart the PC and quit all resident applications before re-installing the software.

■ Windows® XP

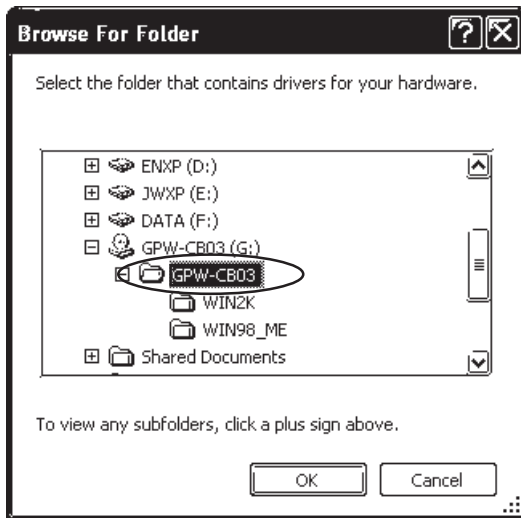
1. Start Windows, and connect the GPW-CB03 to your PC's USB port. Then, insert this package's driver CD into the PC's CD-ROM drive.
2. In the [Found New Hardware Wizard] dialog box, check the [Install from a list or specific location (Advanced)] option, and click [Next].



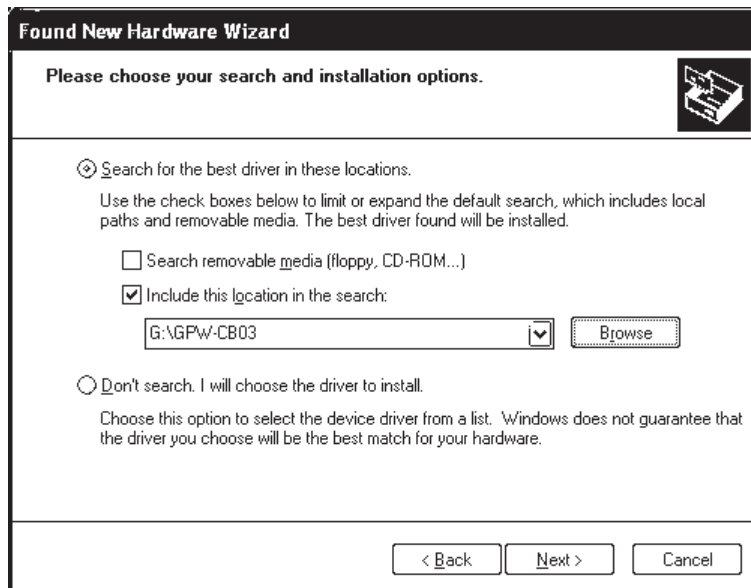
3. Check the [Include this location in the search:] option, and click [Browse].



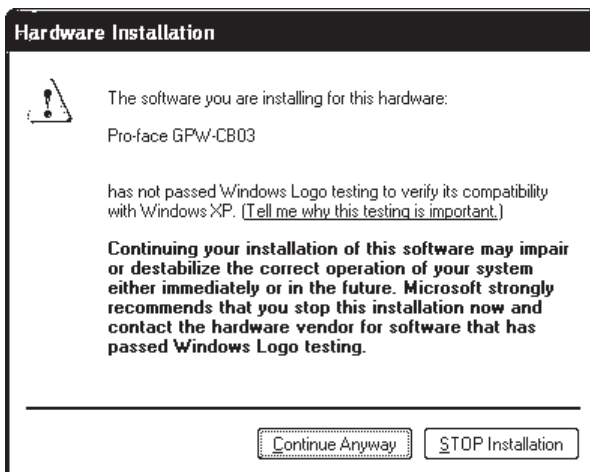
4. Select the [GPW-CB03] folder in the installation CD-ROM, and click [OK].



5. In the [Found New Hardware Wizard] screen, click [Next].



6. In the [Hardware Installation] screen, click [Continue Anyway].



7. Click [Finish] to complete the installation.



If the Data Transfer Cable is unplugged from the port designated during installation and connected to a different port, the OS will recognize the new port. Therefore, be sure to always use the port designated during installation.

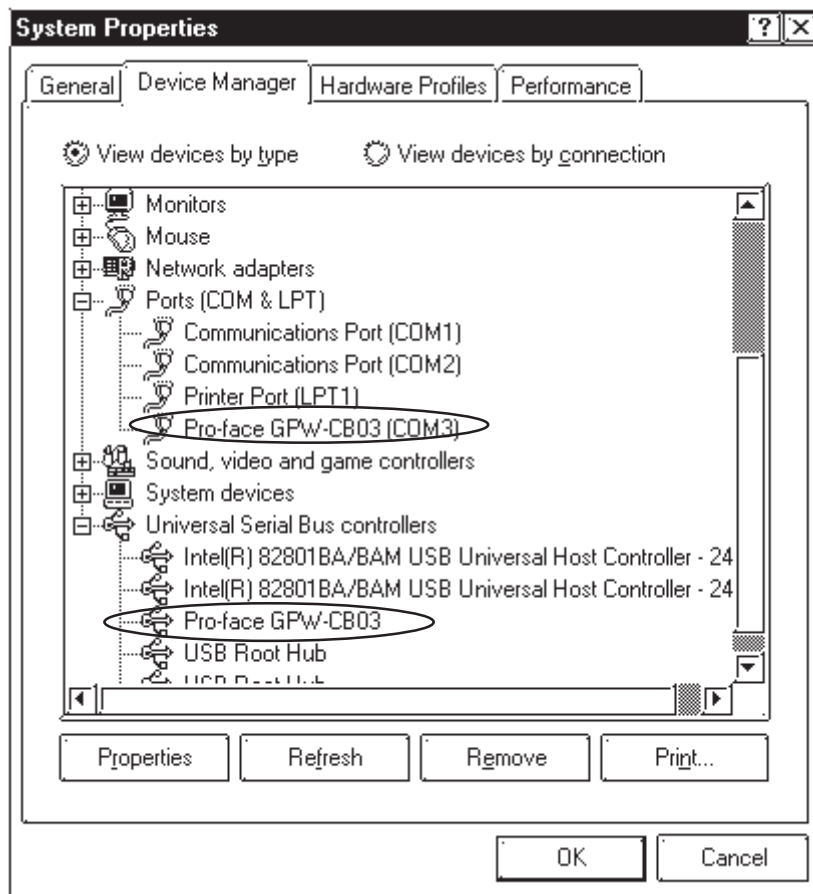


If installation does not complete successfully, be sure to restart the PC and quit all resident applications before re-installing the software.

4

Post-Installation Check

1. Right-click on [My Computer] and click on [Properties]. When the [System Properties] box appears, click on [Device Manager].
2. Confirm that [Pro-face GPW-CB03 (COM3)] is available in the [Ports [COM & LPT]] sub-folder (Windows Me System Properties dialog box).



- The COM number (“3” in the above figure) is assigned automatically by the OS.
- If the OS has previously allocated COM numbers for other devices (internal modems, IrDA ports, etc.), the GPW-CB03 will be allocated to the next available COM number.

5

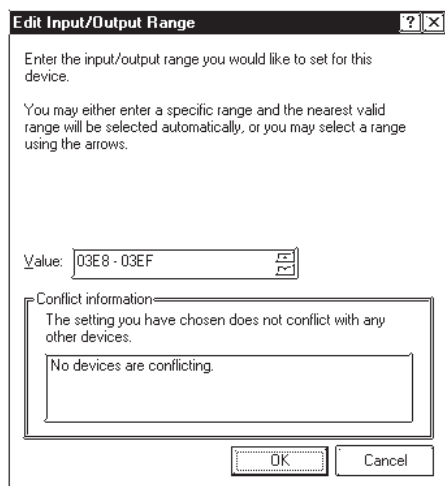
Changing the COM Port Number

■ Windows® Me (Windows® 98)

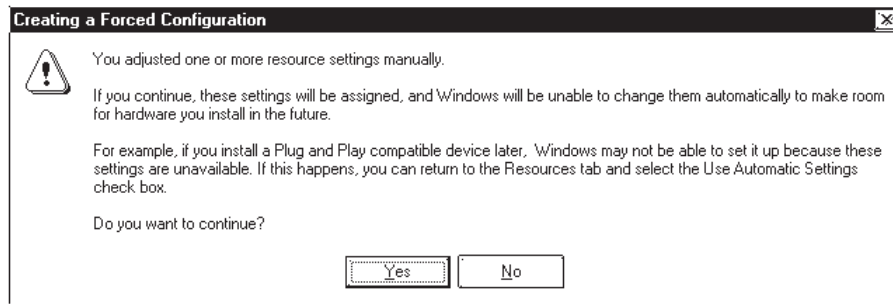
1. Right-click on your desktop's [My Computer] icon. Then, click on the [Properties] selection to call up the [System Properties] dialog box. There, click on the [Device Manager] tab.
2. Double-click on [Ports [COM & LPT]], and check which COM number is being used for the USB cable.
3. In [Device Manager], double-click on [Modem], and check the modem's COM number (This can only be done if your PC is equipped with a modem).
4. If your PC contains an IrDA device, check that device's COM number.
5. The following table shows valid Input/Output range values for any currently unused COM port numbers:

COM Number	Input/Output Range
COM1	03F8-03FF
COM2	02F8-02FF
COM3	03E8-03EF
COM4	02E8-02EF

6. Double-click again on [Ports [COM & LPT]]. Select [Pro-face GPW-CB03], and click the [Properties] button.
7. In the [Pro-face GPW-CB03 [COM3] Properties] dialog box, click on the [Resources] tab. Uncheck the [Use Automatic Settings] checkbox.
8. Confirm that [Input/Output range] is selected, and click the [Change Setting] button.
9. In the following [Edit Input/Output Range] dialog box, select/enter a COM range (in the [Value] box) that does not conflict with any of the other previously set COM numbers. Then, click [OK].

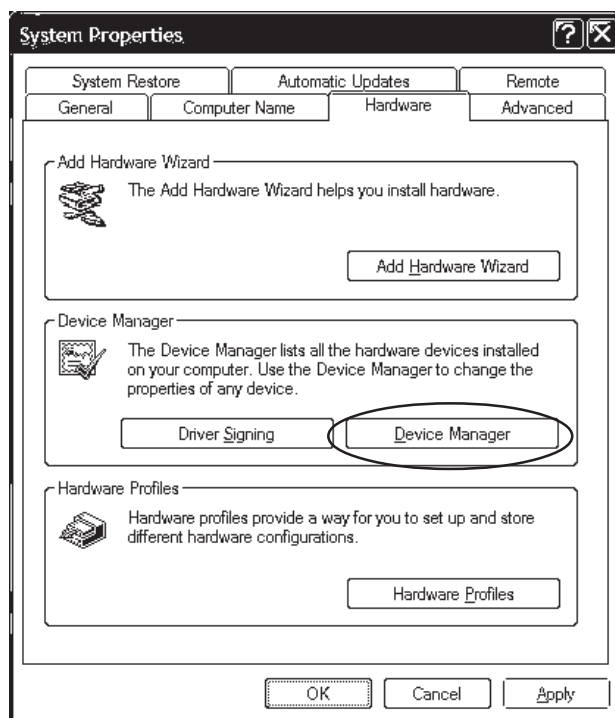


10. The following [Creating a Forced Configuration] dialog box will appear. Click [Yes]. Last, in the [System Settings Change] dialog box, you will be asked to restart your computer. Click [Yes].



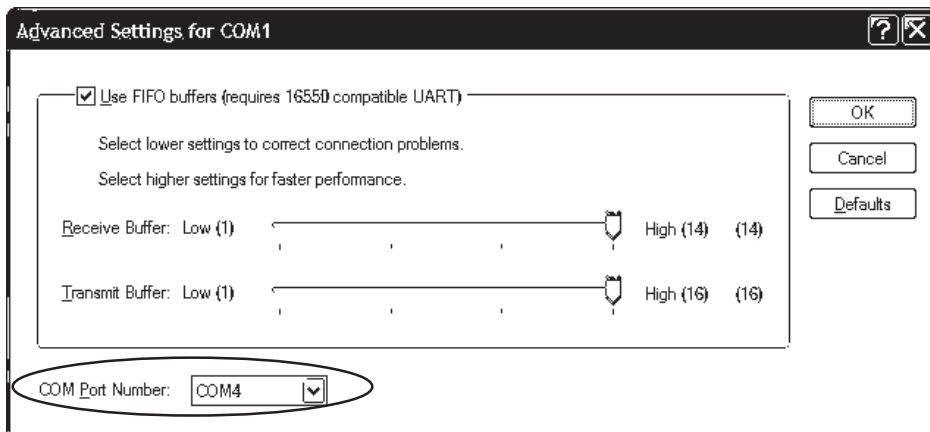
■ Windows® XP (Windows® 2000)

1. Right-click on your desktop's [My Computer] icon. Then, click on the [Properties] feature.
2. This opens up the [System Properties] dialog box. Click on the [Hardware] tab, and click the [Device Manager] button.

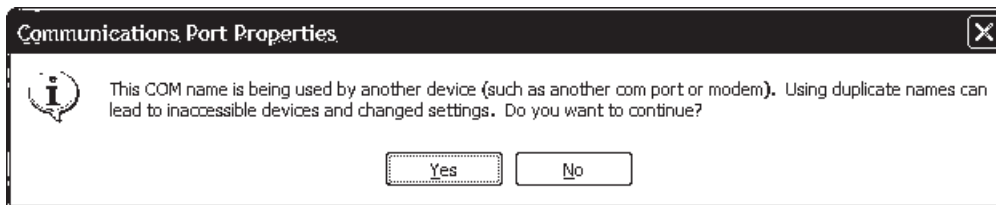


3. In [Device Manager], double-click on [Ports [COM & LPT]]. Select [Pro-face GPW-CB03], and click on [Properties].
4. In the [Pro-face GPW-CB03 [COM3] Properties] dialog box, click on the [Port Settings] tab, and click the [Advanced] button.

5. In the following [Advanced Settings for COM1] dialog box, select an unused number for the [COM Port Number], and click [OK].



6. When the following [Communication Port Properties] dialog box appears, click [Yes].



6 Uninstalling the Driver

Unplug the USB Data Transfer Cable from your PC's USB port. Double-click the CD-ROM's "DRemover_2k.exe" file to start the uninstallation process.

7 Troubleshooting

The following table describes errors that may occur when using the USB Data Transfer Cable, and their possible solutions.

Problem/Symptom	Solution
The USB Data Transfer Cable is not recognized.	Connect the USB Data Transfer cable correctly, OR restart your PC. Also, when connecting a USB hub, be sure to connect it directly to your PC's USB port.
Overcurrent occurred.	
The Plug and Play is not functioning correctly.	
I am unable to use the USB Data Transfer Cable after I connect it to a USB hub.	The power supplied from the hub may be insufficient. Be sure the hub is self-powered.
	Connect the USB Data Transfer Cable directly to the PC's USB port.
	Confirm that the USB Data Transfer Cable confirms to USB Specification Rev. 1.1 or later
After installation, a "?" is displayed when I try to confirm the cable's status via the Device Manager.	The driver has not been installed correctly. Uninstall the driver and then re-install it. For driver uninstallation procedures, Reference "6 Uninstalling the Driver" For driver installation procedures, Reference "3 Installation Procedure"

Although this USB Data Transfer Cable has been thoroughly tested, occasionally data transfer may not be possible due to USB-related device incompatibility or your PC's system design.

Memo